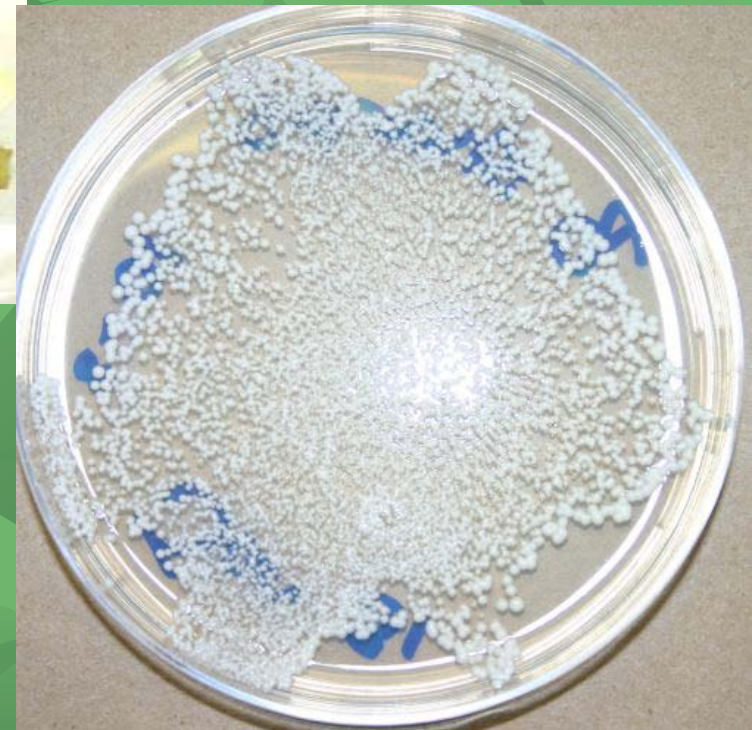
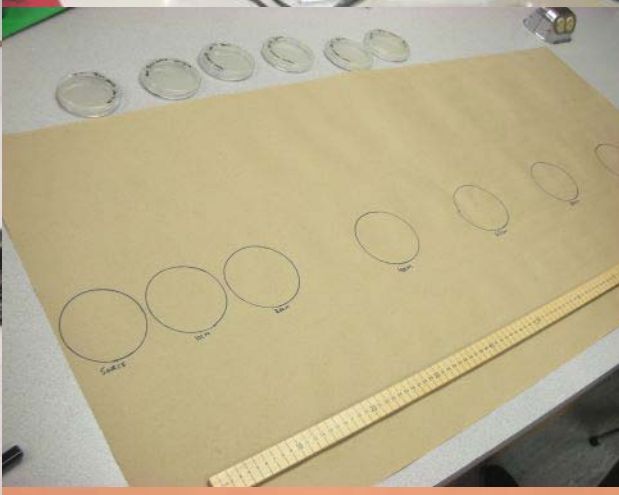




Review lab for how to  
do serial dilutions and  
estimate number of  
bacteria in one fruit



**Bacterial populations lab: cucumber with soft rot bacteria (*Erwinia carotova*)**



## Bacterial dissemination lab: aerosol transport of *Serratia marcescens*



**Bacterial leaf spot of chrysanthemum lab: inoculation of leaves with *Pseudomonas cichorii***

Bacteria

© [Kwantlen.ca/Horticulture](http://Kwantlen.ca/Horticulture)



**Bacterial leaf spot and canker disease: *Pseudomonas syringae* (e.g. laural, cherry, lilac, fern)**



Fire blight caused by *Erwinia amylovora* (e.g. cotoneaster, sorbus)

Bacteria



**Bacterial diseases: crown gall caused by *Agrobacterium tumefaciens* (e.g. rose, euonymus)**



**Beneficial bacterial: e.g. compost**

Bacteria

**All images and text are copyright property of Kwantlen Polytechnic University and photographer.**

**Slides may be copied (but not altered in anyway) and used for personal, non-profit, or educational.**

**To request permission to use any slide or image for commercial use please contact [aaron.roth@kwantlen.ca](mailto:aaron.roth@kwantlen.ca)**