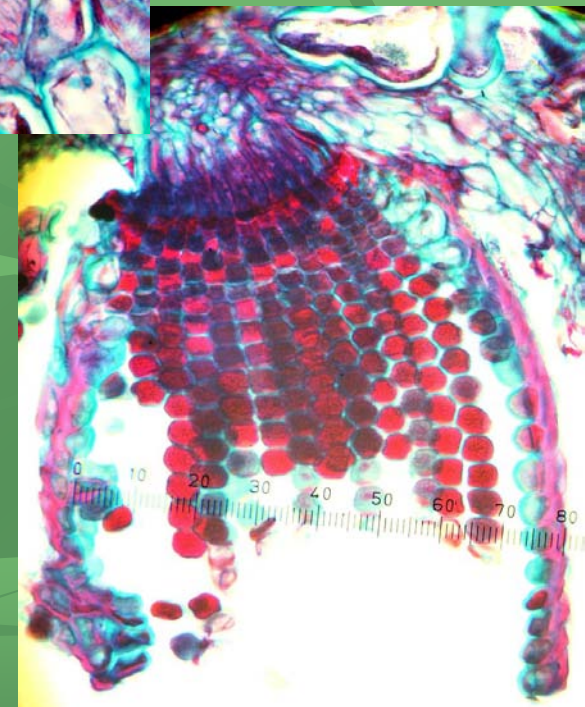
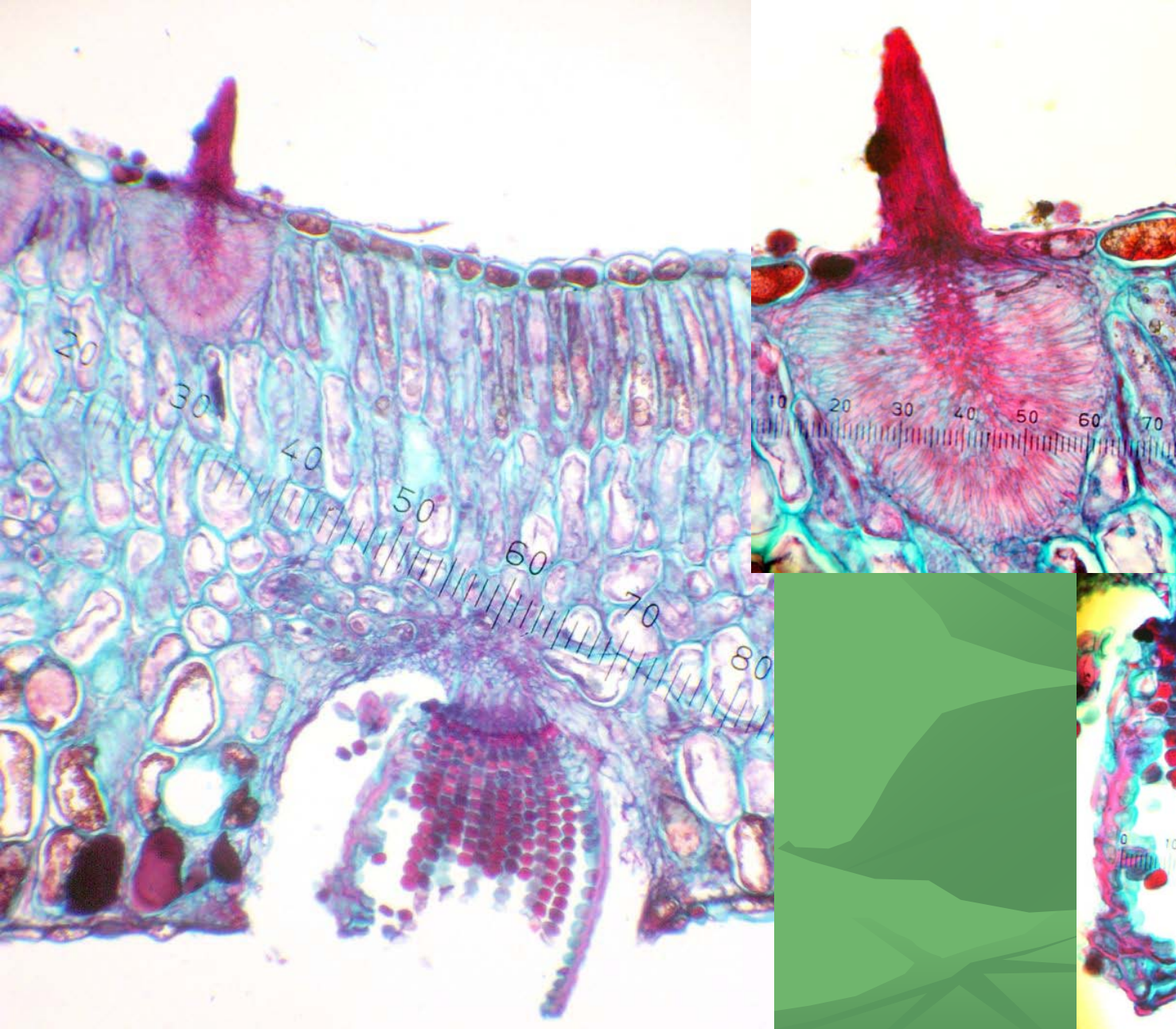


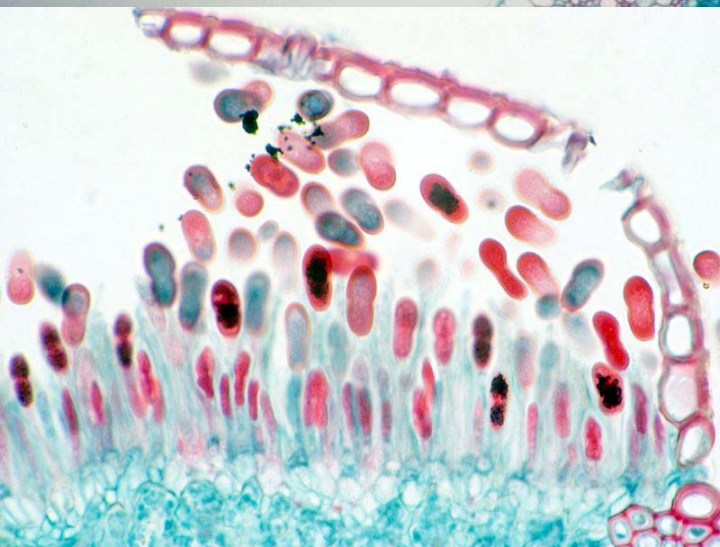
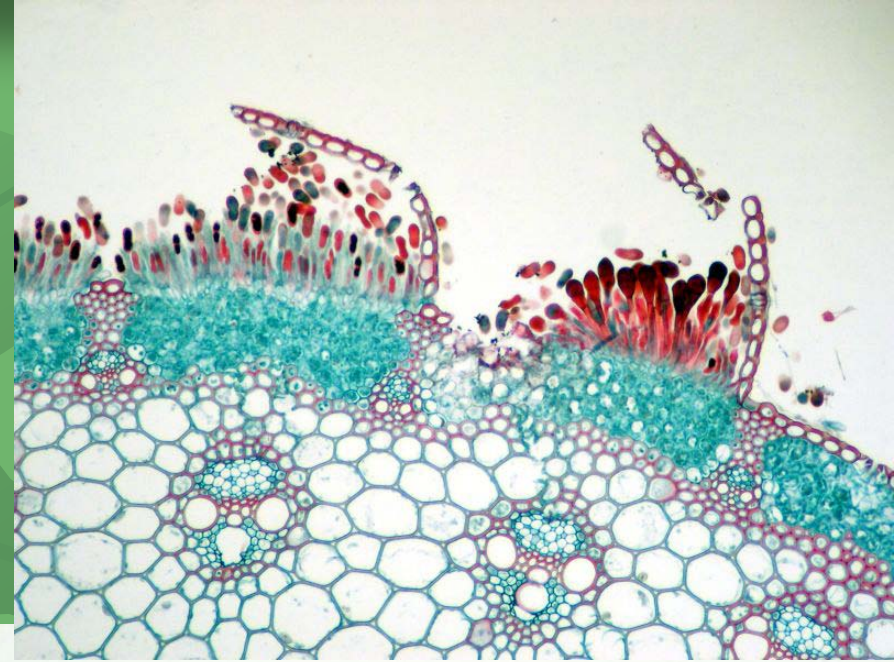
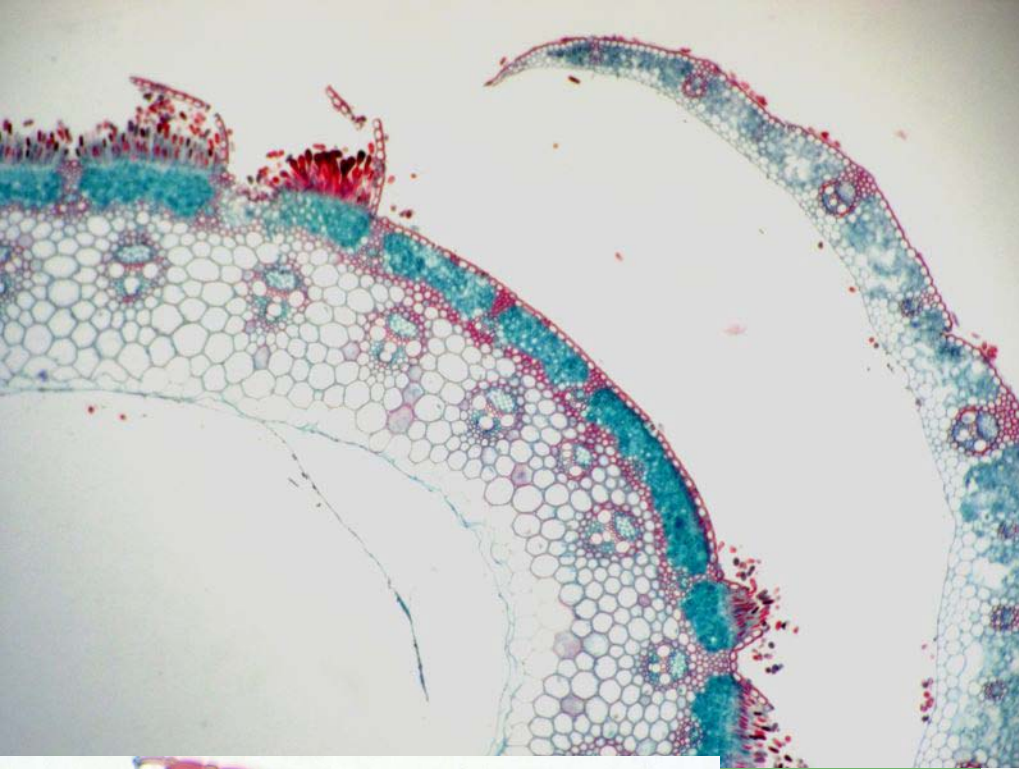


Wheat rust

Fungi - Rust



Stem rust of wheat on alternate host - barberry: Spermatium (upper) and aecium (lower)

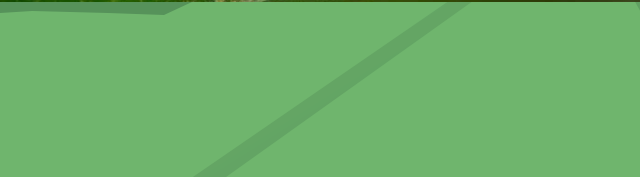


Urediniospores (peanut shaped) and teliospores (two-celled) on wheat



Pine gall rust

Fungi - Rust



Mahonia rust

Fungi - Rust



Hollyhock rust

Fungi - Rust



Pear trellis rust

Fungi - Rust

© Kwantlen.ca/Horticulture

All images and text are copyright property of Kwantlen Polytechnic University and photographer.

Slides may be copied (but not altered in anyway) and used for personal, non-profit, or educational.

To request permission to use any slide or image for commercial use please contact aaron.roth@kwantlen.ca