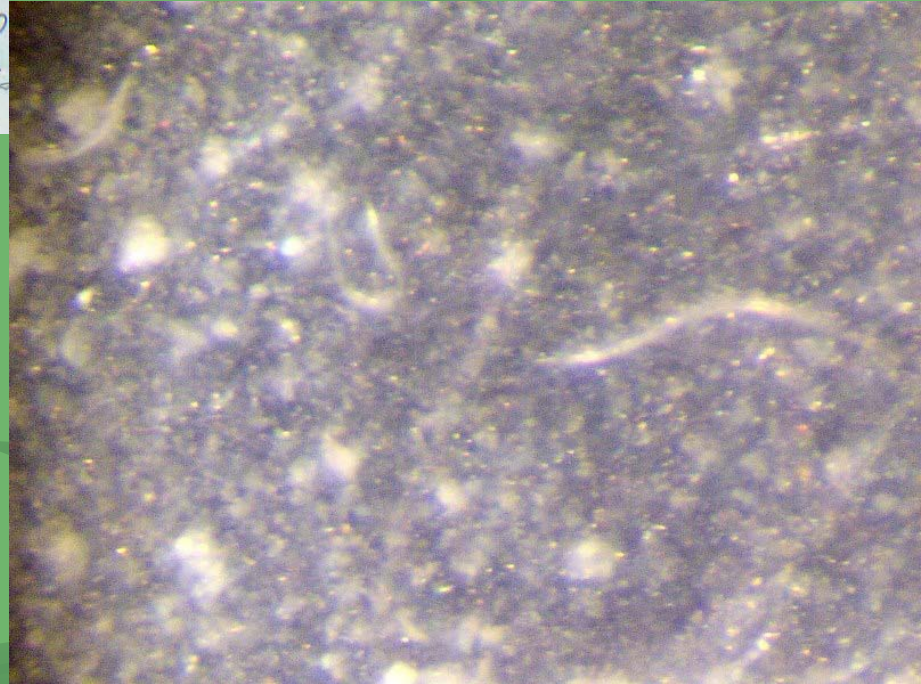
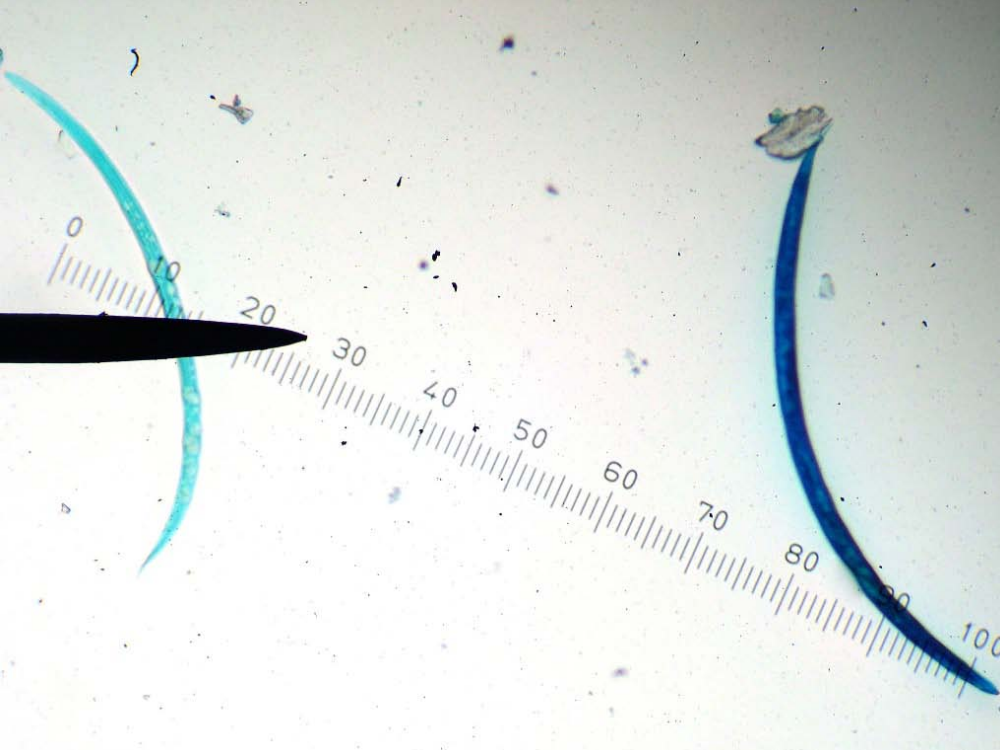




Nematodes in larva carcass.

Nematodes

© Kwantlen.ca/Horticulture



Steinernema feltiae and *S. carpocapsae* for insect larvae control in soil and media.



Heterorhabditis bacteriophora compared to a much larger saprophytic nematode.



Chinese hibiscus with foliar nematode damage (*Aphelenchoides*).



Pratylenchus - root lesion nematode

Meloidogyne - root knot nematode

Other notable nematodes.

All images and text are copyright property of Kwantlen Polytechnic University and photographer.

Slides may be copied (but not altered in anyway) and used for personal, non-profit, or educational.

To request permission to use any slide or image for commercial use please contact aaron.roth@kwantlen.ca