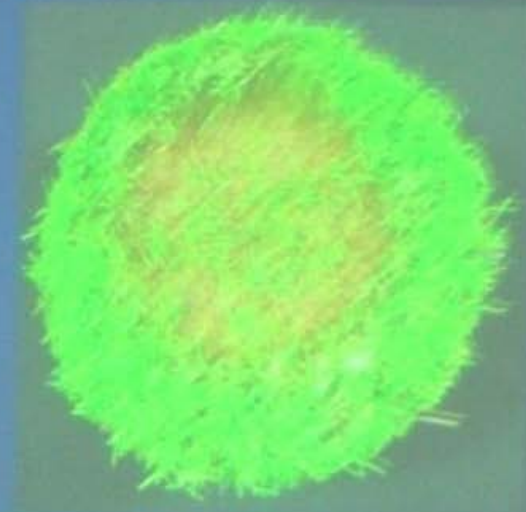
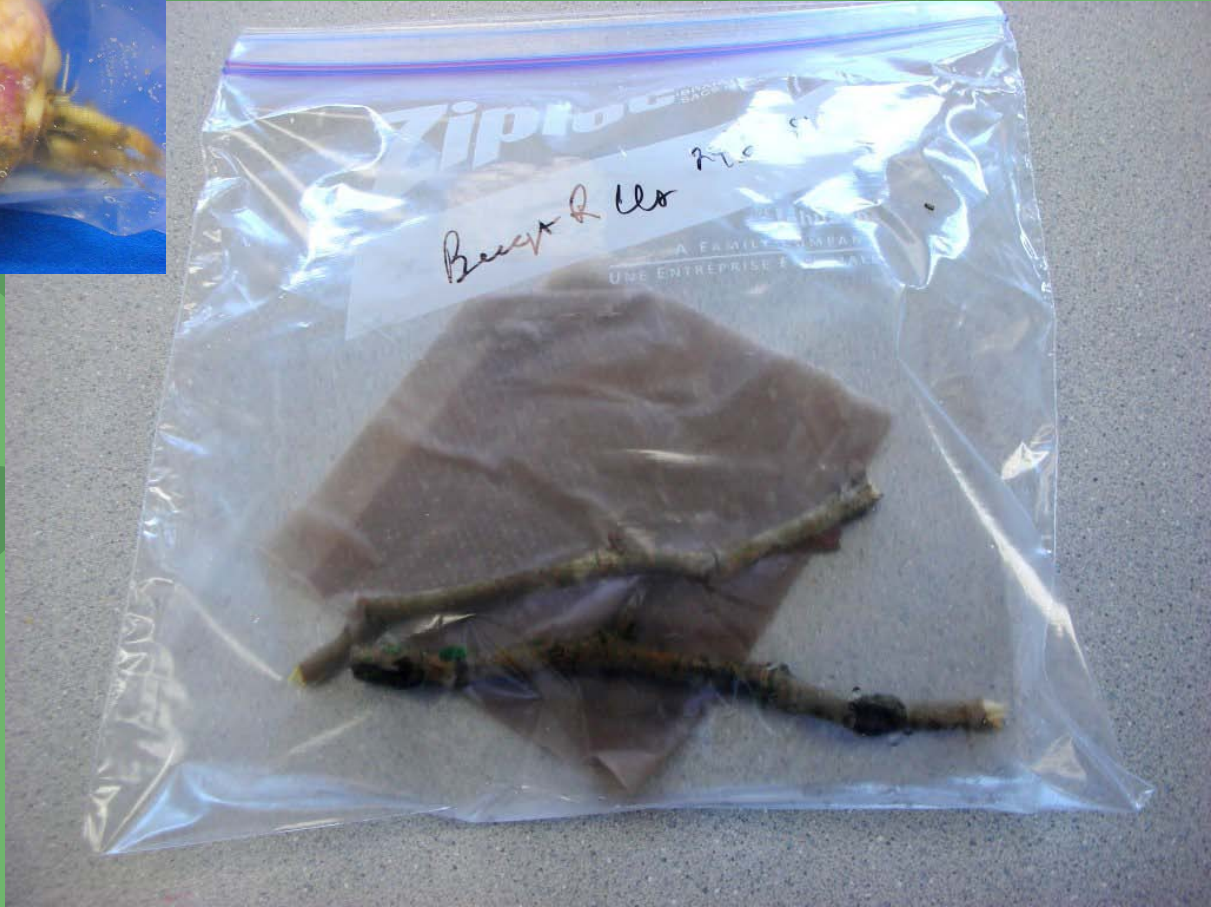


- Describe the problem in detail such as the symptoms & pattern of the symptoms.
- Digital photos are great for large specimens
- Mention if the problem is spreading.
- Provide history of the crop (age, variety, pesticide application, irrigation system, soil type, fertilizer program etc.)

Source: B.C. Ministry of Agriculture and Lands

- A diagnosis is as good as the sample allows.
- A broken limb, a leaf, roots or totally dead part of the plant is not good for identifying the problem.
- It is best to send several whole plants with varying degrees of the problems.





**Keep samples in a humid chamber for a few to get fungus to sporulate so it can be identified.**



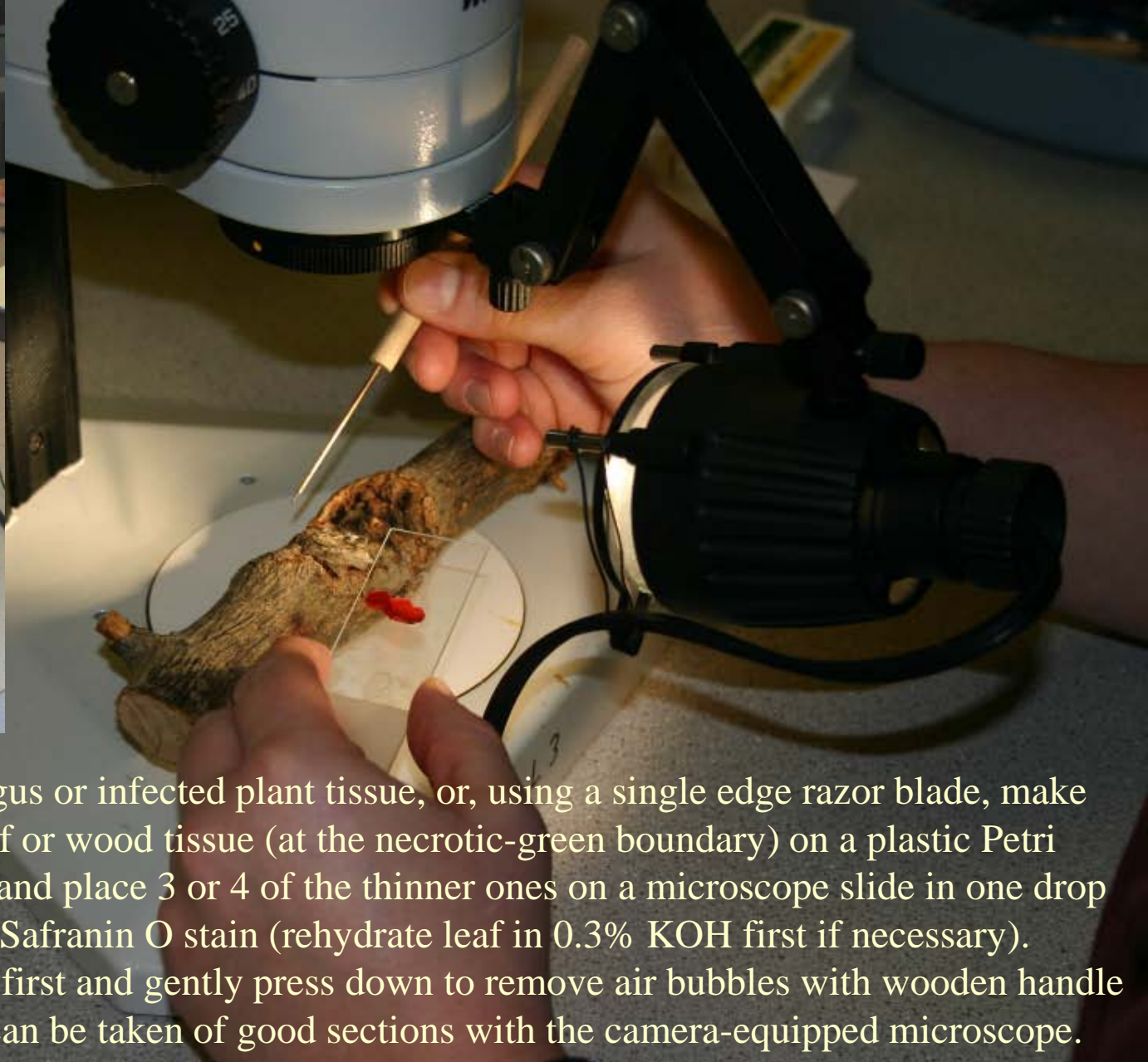


Soak canker or leaf bits in 70% rubbing alcohol for 90 seconds, rinse in sterile water and then aseptically plate on PDA.





**Serial dilution and plating of bacteria to get individual colonies for help with identification.**



Remove a **small** bit of fungus or infected plant tissue, or, using a single edge razor blade, make several **thin** sections of leaf or wood tissue (at the necrotic-green boundary) on a plastic Petri dish. View sections at 10x and place 3 or 4 of the thinner ones on a microscope slide in one drop of 0.5% Phloxine B or 1% Safranin O stain (rehydrate leaf in 0.3% KOH first if necessary). Lower cover slip one edge first and gently press down to remove air bubbles with wooden handle of teasing needle. Images can be taken of good sections with the camera-equipped microscope.

## Microscope slide preparation



**All images and text are copyright property of Kwantlen Polytechnic University and photographer.**

**Slides may be copied (but not altered in anyway) and used for personal, non-profit, or educational.**

**To request permission to use any slide or image for commercial use please contact [aaron.roth@kwantlen.ca](mailto:aaron.roth@kwantlen.ca)**