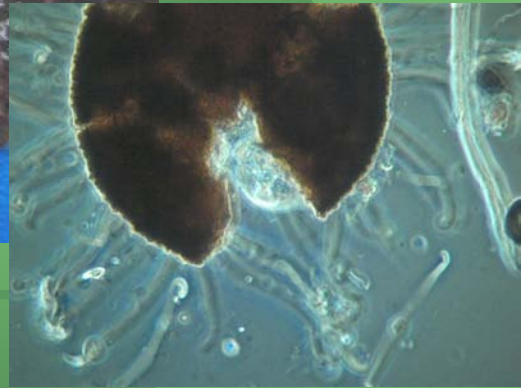
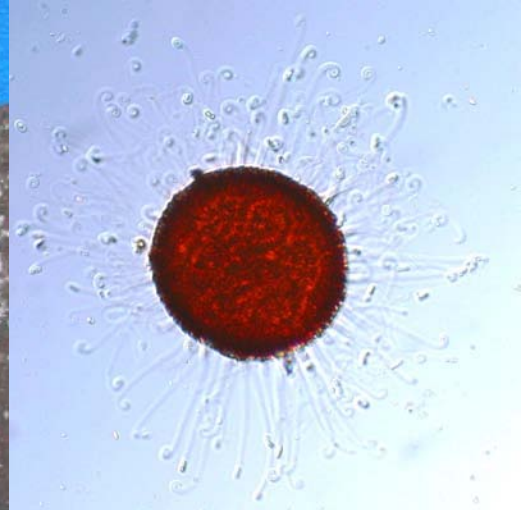


**Symptom = Leaf and fruit spots; sign = fungus (acervuli); diagnosis = apple scab**



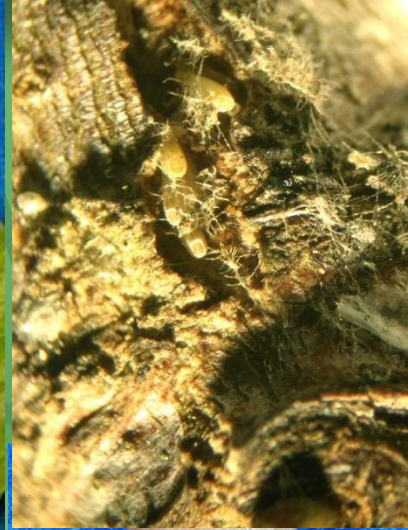
**Symptom = leaf spots; sign = fungus (aecia); diagnosis = hollyhock rust**



**Symptom = white leaf “powder”; sign = fungus (cleistothecia); diagnosis = powdery mildew**

Symptoms & Signs

© [Kwantlen.ca/Horticulture](http://Kwantlen.ca/Horticulture)



**Symptom = canker, leaf necrosis; sign = fungus (pycnidia); diagnosis = plane anthracnose**  
Symptoms & Signs © Kwantlen.ca/Horticulture



**Symptom = canker; sign = fungus (perithecia); diagnosis = perennial (*Nectria*) canker**



**Symptom = canker; sign = fungus (aecia); diagnosis = pine gall rust**

Symptoms & Signs

© Kwantlen.ca/Horticulture



**Symptom = holes and pitch in bark; sign = bark beetle; diagnosis = pine bark beetle**

**All images and text are copyright property of Kwantlen Polytechnic University and photographer.**

**Slides may be copied (but not altered in anyway) and used for personal, non-profit, or educational.**

**To request permission to use any slide or image for commercial use please contact [aaron.roth@kwantlen.ca](mailto:aaron.roth@kwantlen.ca)**