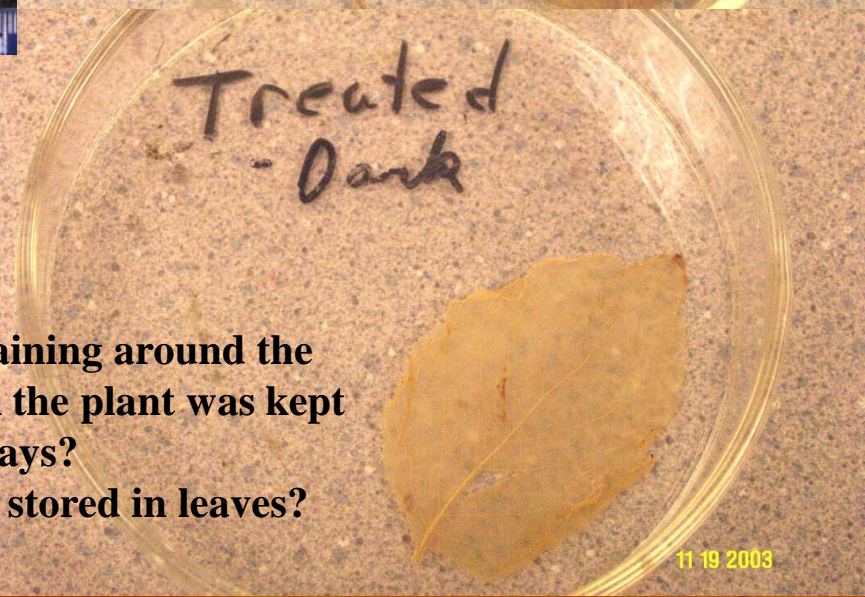


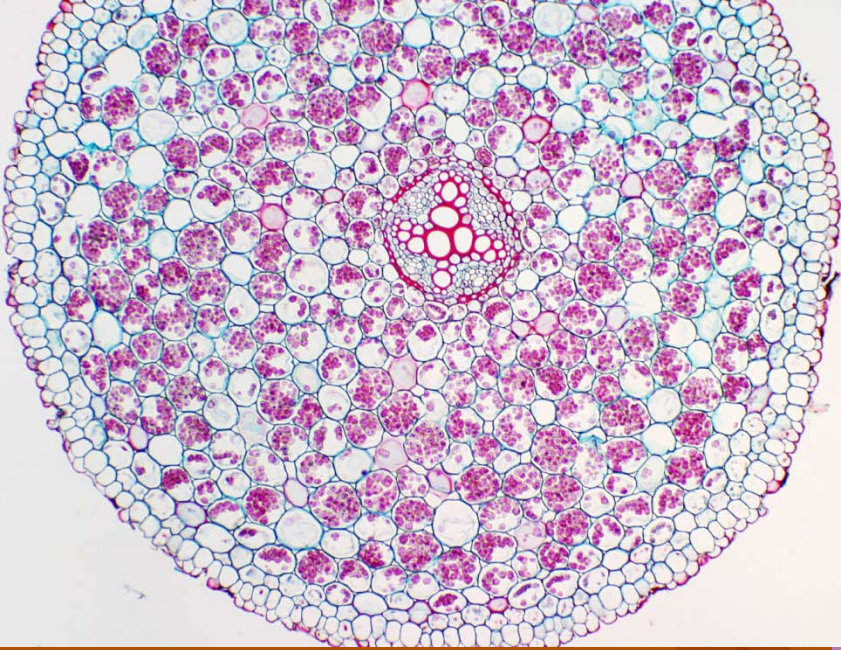
**Why was there no staining around the edge of the leaf when the plant was kept in the dark for two days?
Where then is starch stored in leaves?**



Excess Glucose is Stored as Starch in Chloroplasts

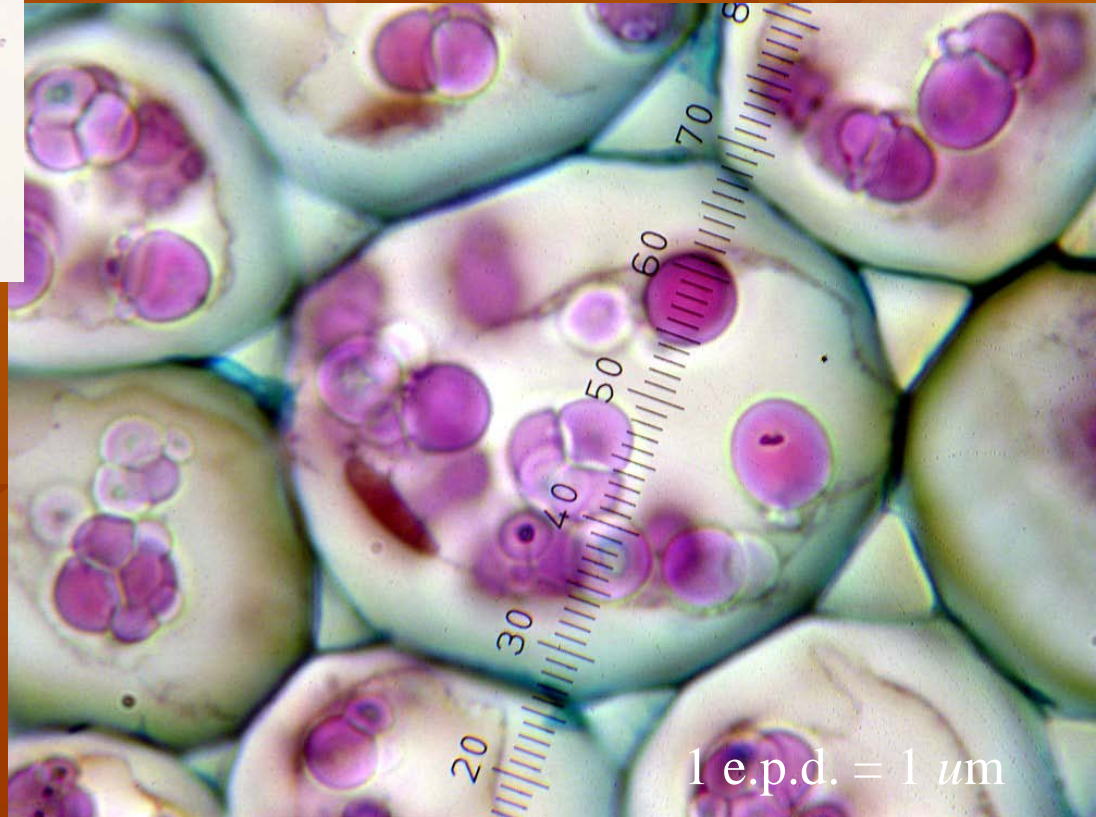
Starch Digestion

© Kwantlen.ca/Horticulture



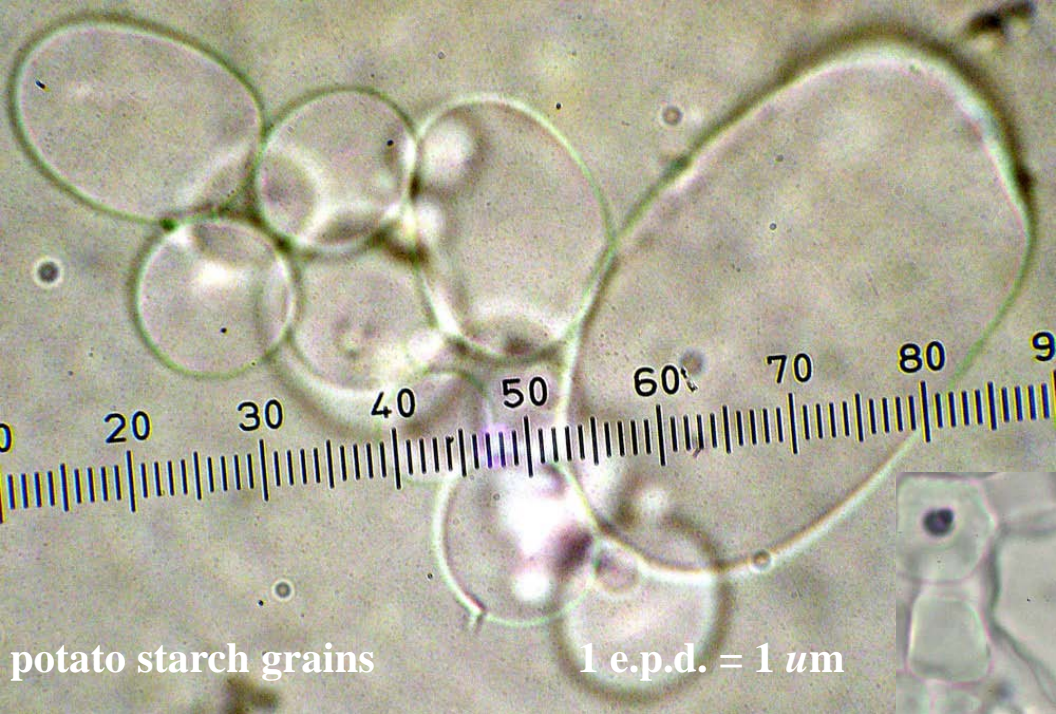
Name the dominant organelle inside these cortical cells in this dicot root c.s.

What do they contain?



Starch storage in roots

Starch Digestion

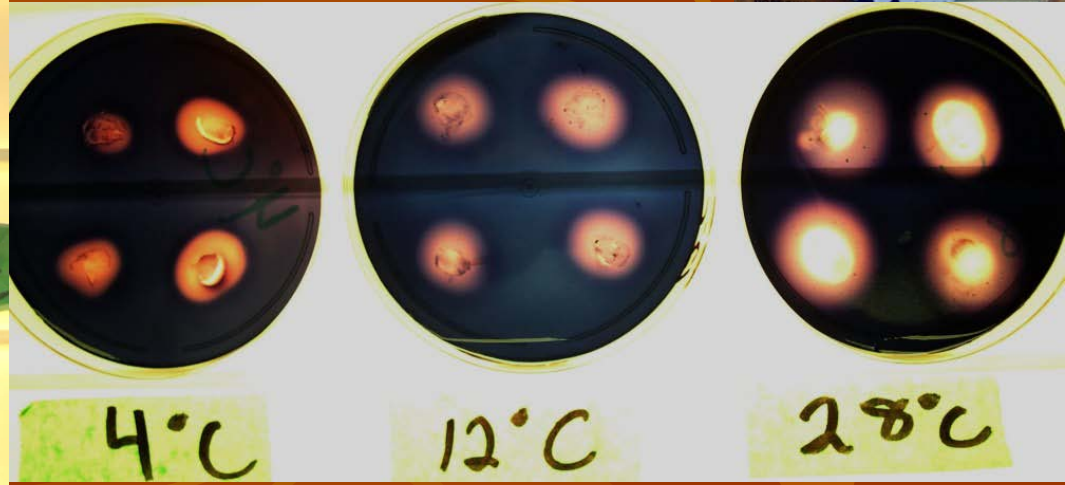
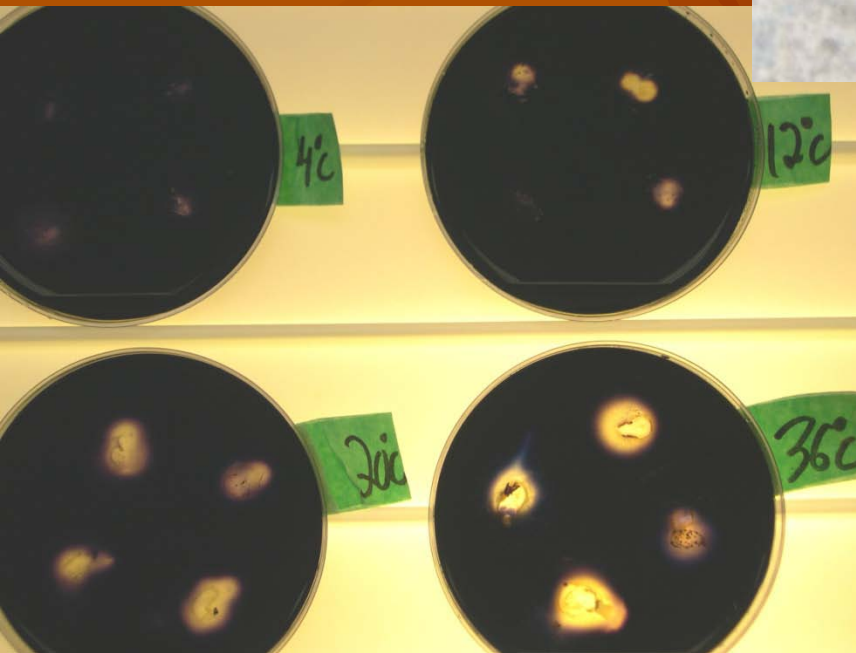


Potato and corn starch grains

Starch Digestion

What part of the corn stained with I2KI?

What caused the clearing on the corn agar plates?



Staining for starch

Starch Digestion