



Woody dicot stem: terminal bud, leaf blade, petiole, axillary bud, node, internode, terminal bud scale scars



Bud and leaf scar: bud, bud scales, leaf scar, vascular bundle scar, stem, lenticel

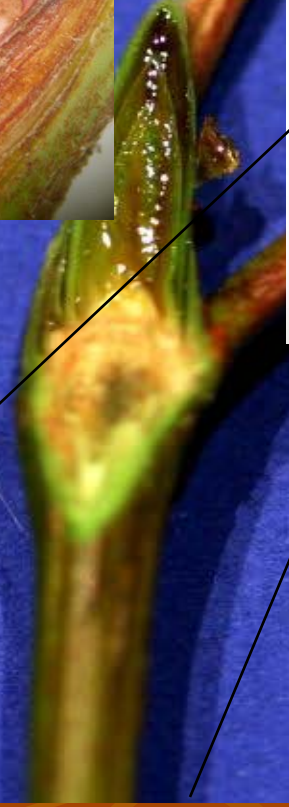
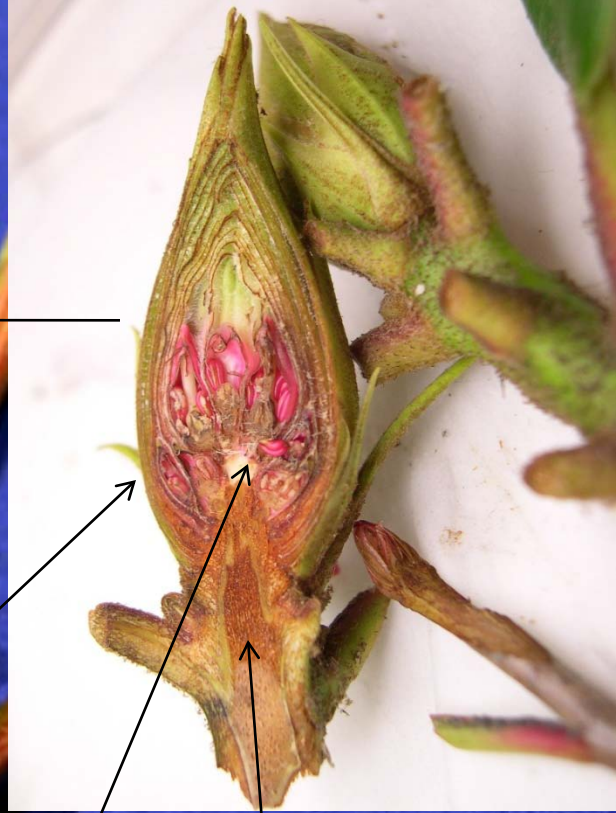


A.L.Roth@kwantlen.ca/plantdatabase

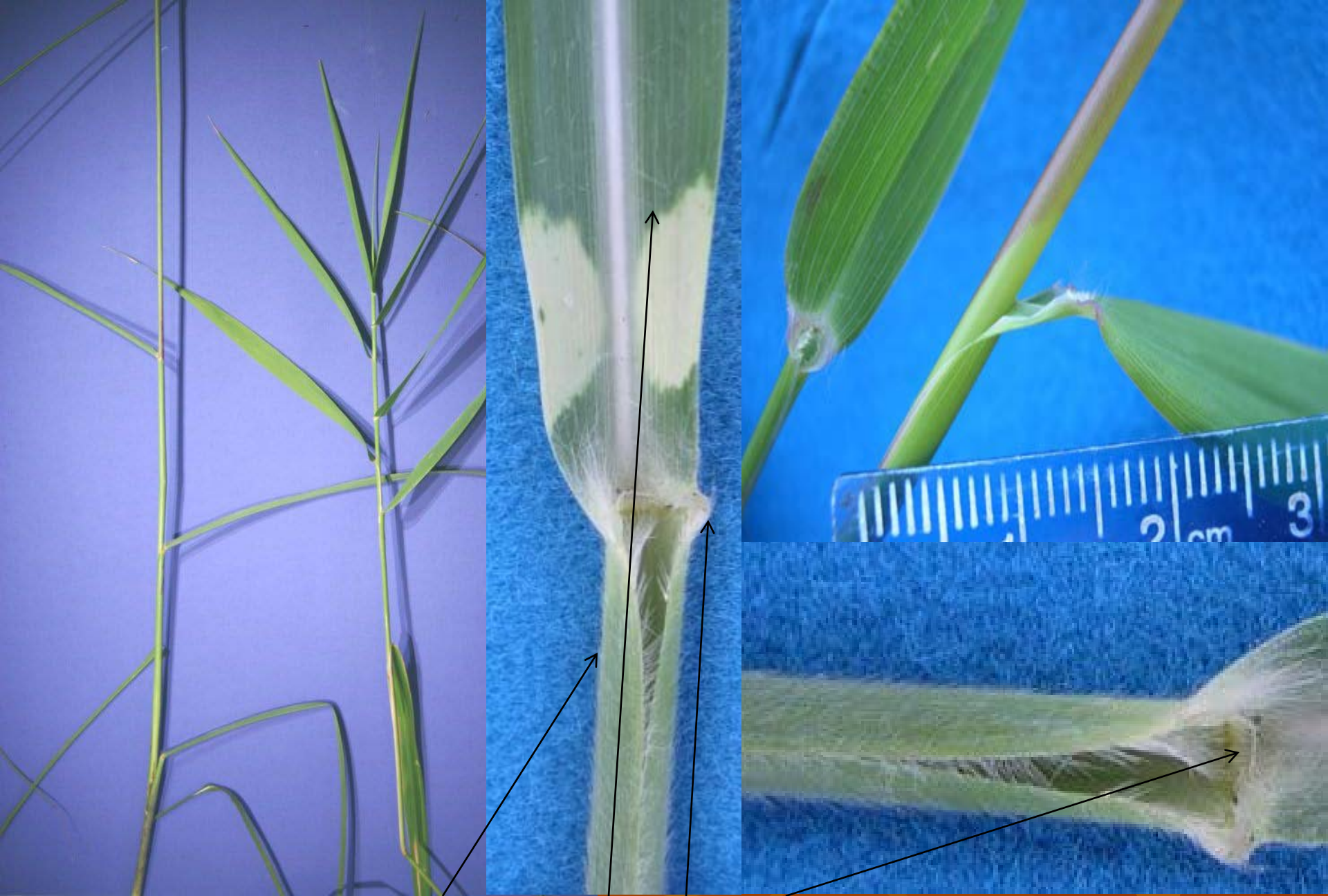


n/en.ca/plantdatabase

Bud and leaf scar: bud, bud scales, leaf scar, vascular bundle scar, stem, lenticel



Vegetative buds and flower buds: bud scales, immature leaves or flowers, apical meristem (growing point), unexpanded stem



Grasses: culm, node, leaf sheath, leaf blade, auricle, ligule

Stems – External



**Rush and Sedge: stems round in cross-section and usually not jointed (rush)
stems with solid pith, triangular in cross-section, and not jointed (sedge)**

OR

Stems – External

© Kwantlen.ca/Horticulture