

5 treatments:



pruned



bag



control



lamp



fan

## Measuring Transpiration: Potometer method

Transpiration



Under which of the five treatments did the plants lose the most water? Why?

## Measuring Transpiration: Gravimetric method

Transpiration

Under which of the five treatments did the dye diffuse the fastest? Why?



Diffusion

Transpiration

© Kwantlen.ca/Horticulture

Why did the liquid level in the tube  
(20% sugar solution) rise during the ?





**Why did water drops form at tips of these Transpiration (especially when the soil is warmer than the air)?**

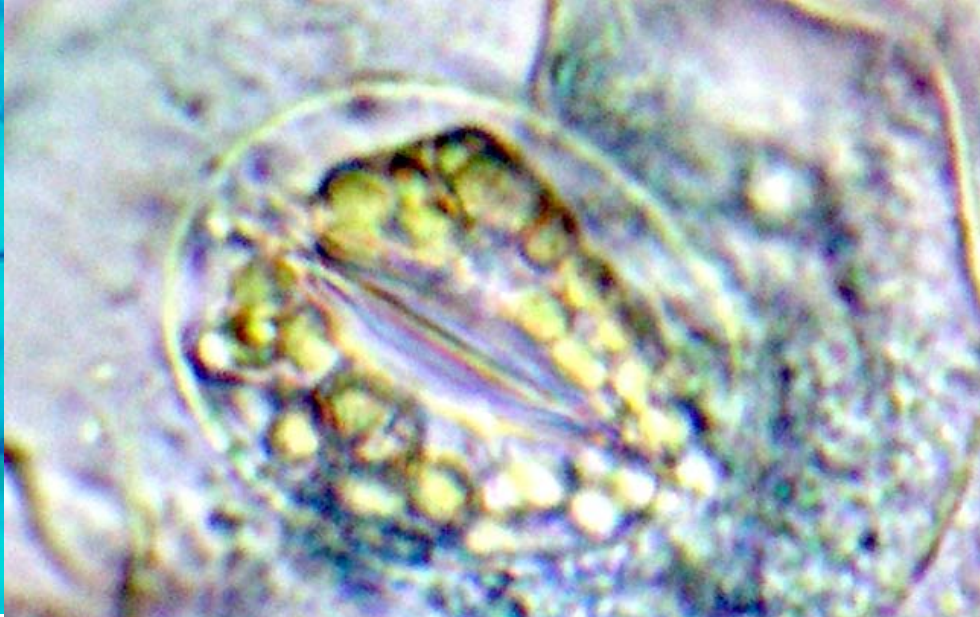
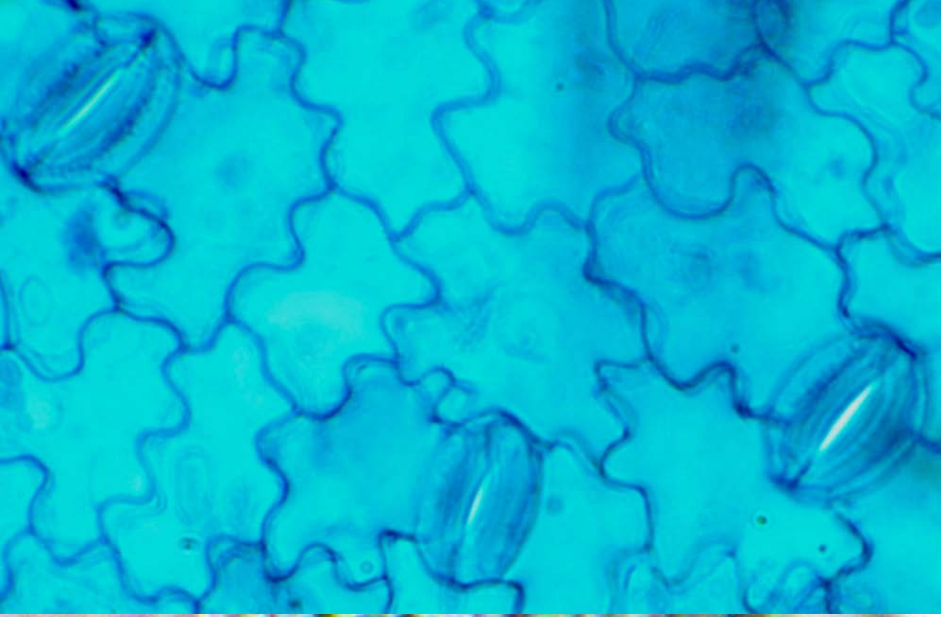
**Guttation**  
Transpiration



Which properties of water allows for its quick absorption by these beans?

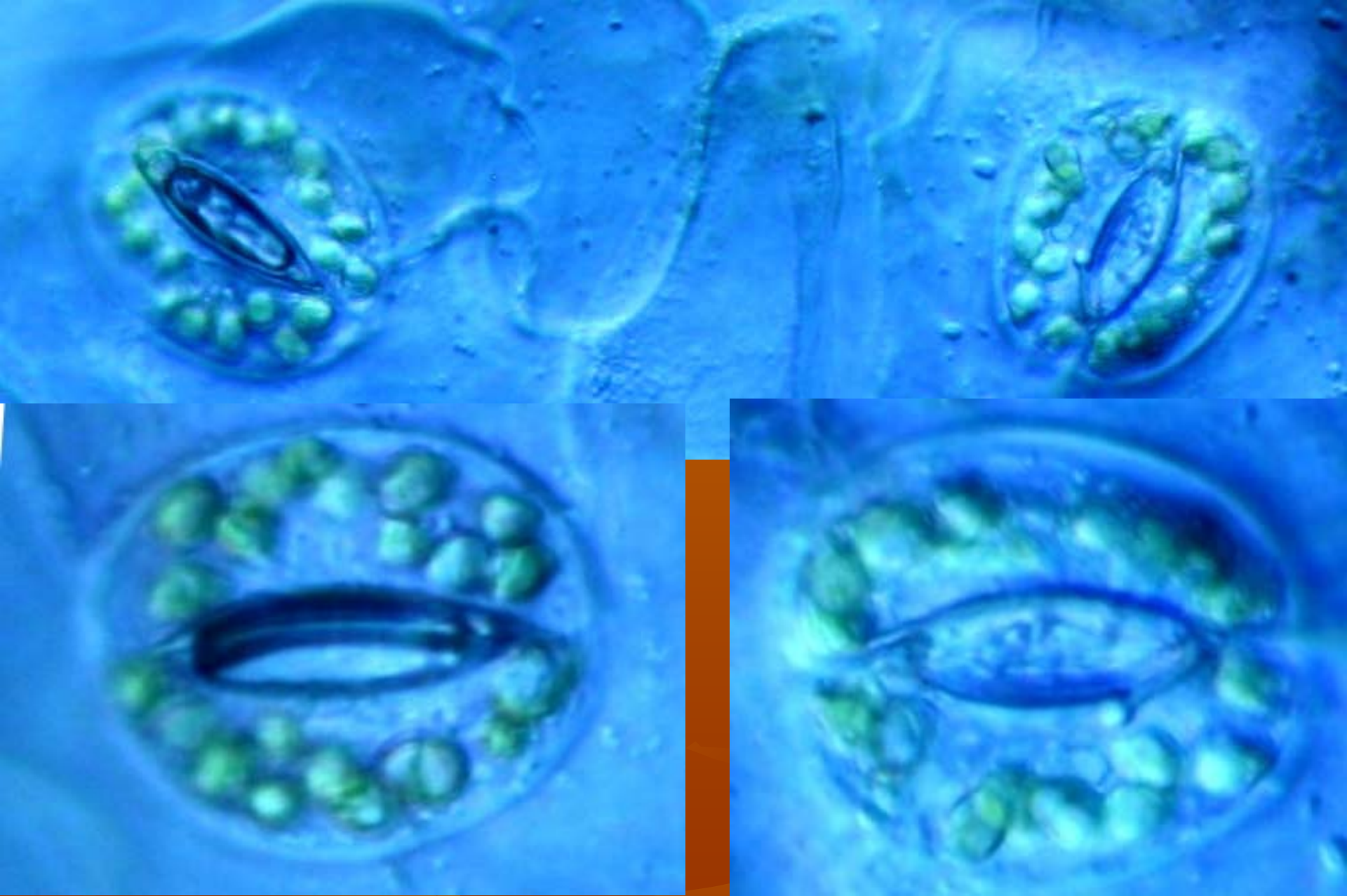
**Imbibition**

Transpiration



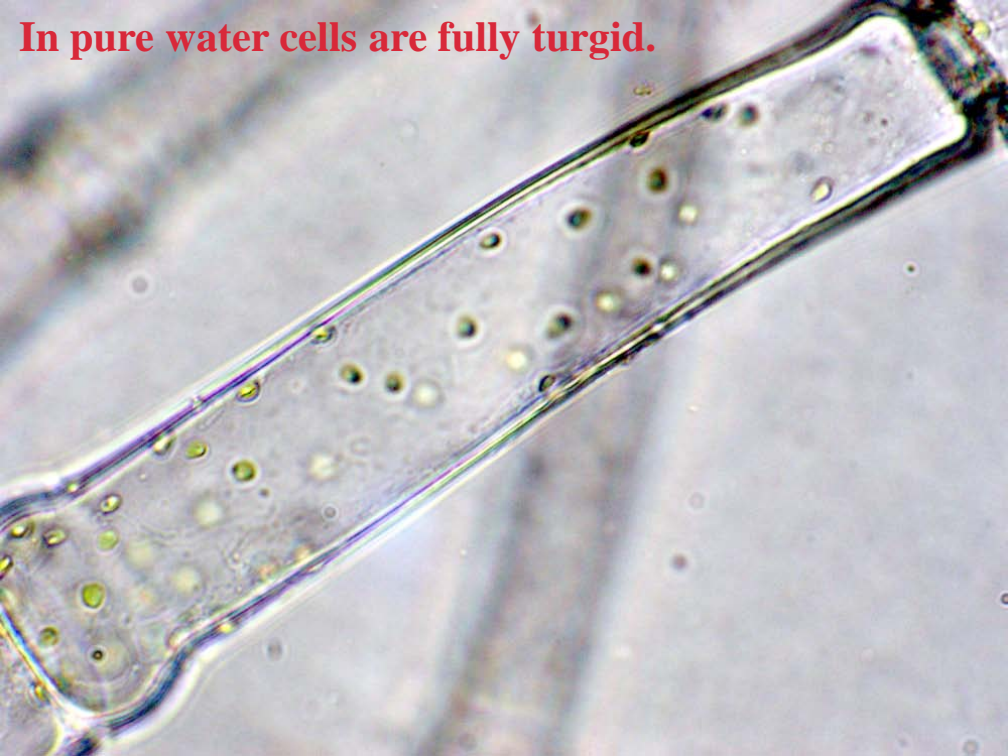
## Plasmolysis (guard cells)

Transpiration



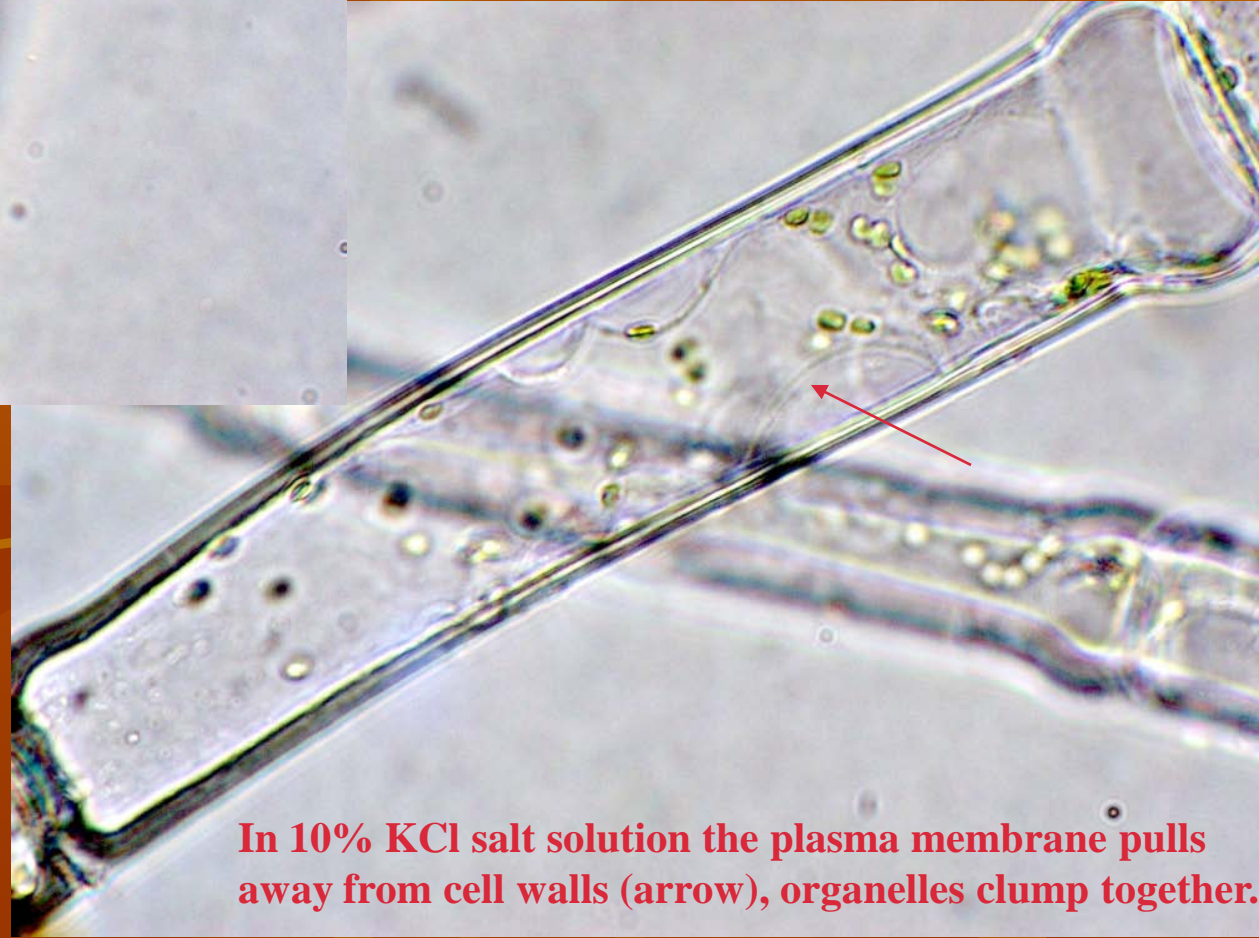
**Plasmolysis (guard cells)**

Transpiration



**In pure water cells are fully turgid.**

**Why did water move out of the cells when the salt solution was applied?**



**In 10% KCl salt solution the plasma membrane pulls away from cell walls (arrow), organelles clump together.**

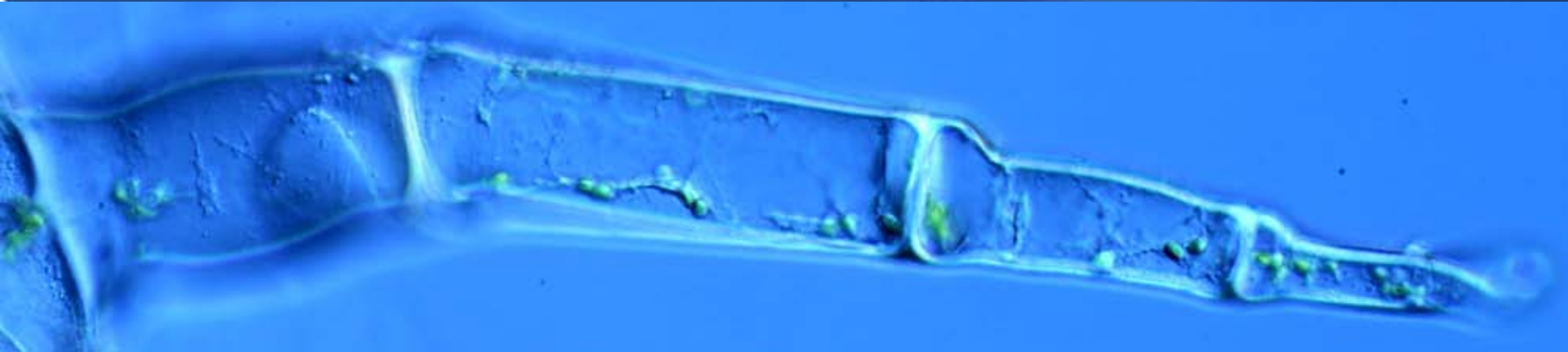
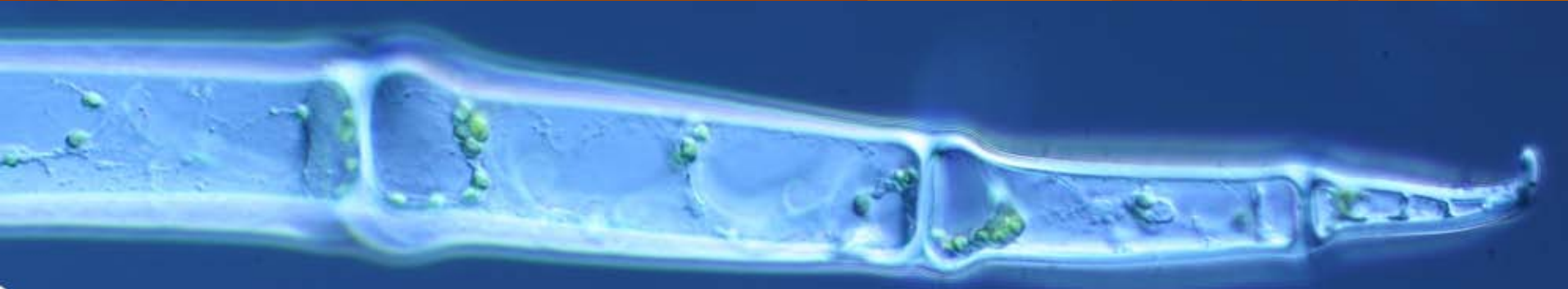
## **Plasmolysis (trichomes)**

Transpiration

**In pure water cells are fully turgid:**



**In 10% KCl salt solution the plasma membrane pulls away from cell walls, organelles clump together:**



**Plasmolysis (trichomes)**

Transpiration

© Kwantlen.ca/Horticulture